



# Nova SPY Digital

## ROBUST, COMPACT & METROLOGY SIMPLIFIED

New generation of 2.4GHz recorders for JRI digital probes.

Monitoring of temperature-sensitive products & processes,



Non-contractual photo

## Presentation

The device transmits the measured data to a nearby LINK or RELAY module via 2.4 GHz radio frequency. Measurements are then automatically sent to the secure JRI Cloud to be hosted and processed on the JRI-MySirius web application.

The Nova SPY Digital measures and records temperature and humidity using the digital probe connected to it. Digital probes have an internal memory that stores calibration coefficients. This means that calibration can be carried out in the laboratory or by simply exchanging probes without interrupting product monitoring.

## Technical features

Interface	LED indicator and touch-sensitive On/Off button
Measurement range	Depending on JRI digital probe type
Communication	2,4 GHz (802.15.4)
Memory	10,000 data-point measurements per channel
Sensor	External to case Depending on JRI digital probe type
Operating conditions	-40°C to +80°C
Probe resolution	Depending on JRI digital probe type
Measuring and transmission period	1 mn
Internal memory recording period	Adjustable from 1 mn to 24 h
Response time $\sigma_{90}$	Depending on JRI digital probe type
Protection	IP66
Case	Polycarbonate – Food contact
Power supply	Lithium A 3,6V battery - Replaceable
Battery life	Up to 6 years*
Dimensions and weight	64 x 54 x 28 mm / ~ 80 g (with battery)
Compliance	CE, ROHS, FCC
Standard calibration points	Depending on JRI digital probe type
Part numbers	13756 E : Nova SPY Digital 13756 X : Nova SPY Digital without battery
Compatibilité	MySirius 4.4 JRI Digital probes : Digital Sensor, Digital Sensor Evolution, Digital Sensor X <sup>2</sup> , Green Digital Sensor

\*Operating at 23°C with an optimized radio configuration

## Benefits

- 3-in-1 multifunction recorder**  
 This device detects the opening of a door/package with a light sensor, simulates a product's core temperature using artificial intelligence, and measures various physical quantities with a digital probe.
- Easy to use**  
 The sensor is ready to use, with operating and alarm LEDs.
- Small & waterproof**  
 Designed for use inside your enclosures.
- Robust**  
 Highly resistant to shock and vibration.
- Excellent measurement quality and accuracy**
- Responsive**  
 Adapts and detects probe changes quickly and automatically.

## Visual aspect



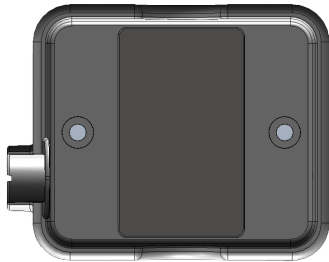
**IP68 binder connector  
for JRI digital probe**



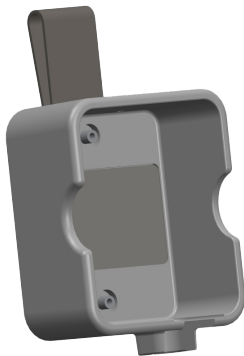
**Battery door**

Screw

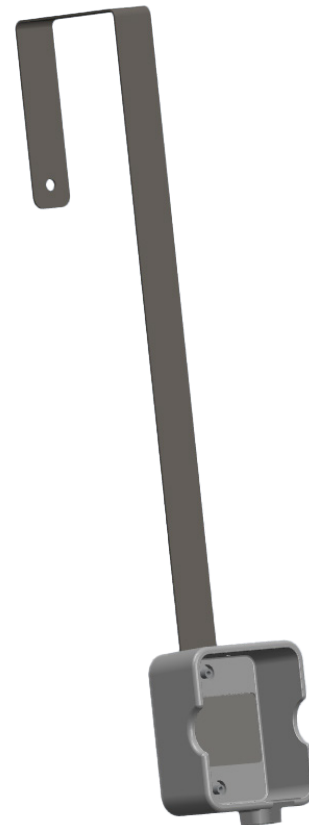
## Accessories



**Protective shell (Supplied by default)  
Réf. 13735**



**Clip and protective shell for Nova SPY  
(Ref. 13991)**



**Caliper with protective shell for Nova SPY  
(Ref. 13992)**